

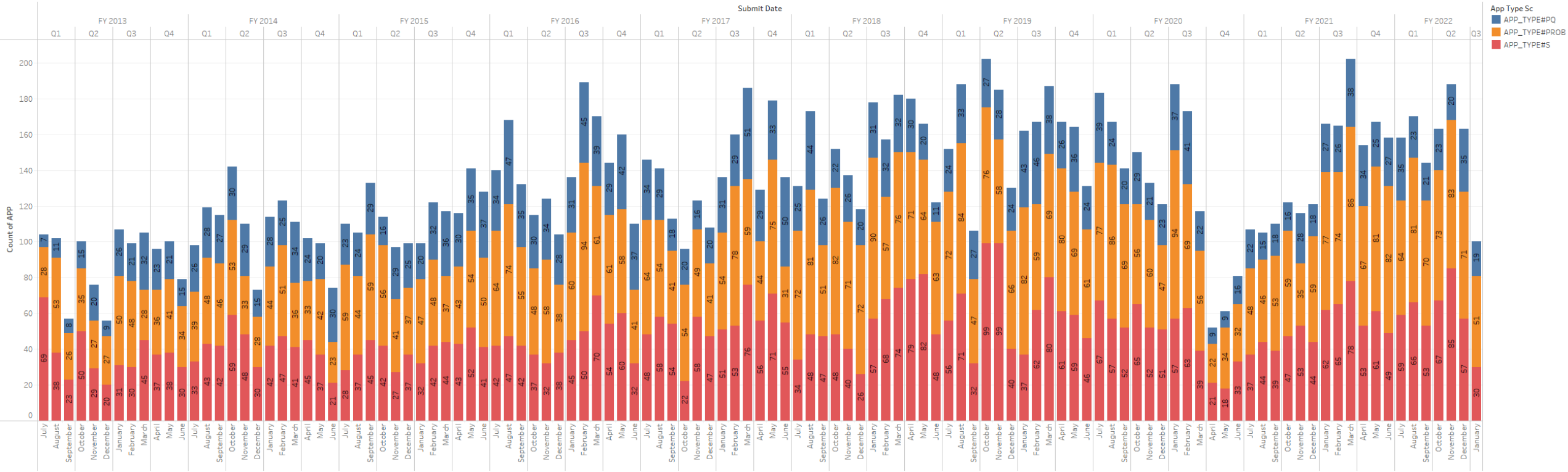


COQB “DASHBOARD”

What might an interactive dashboard of Key Performance Indicators (KPIs) look like for CEOs and AHJs?



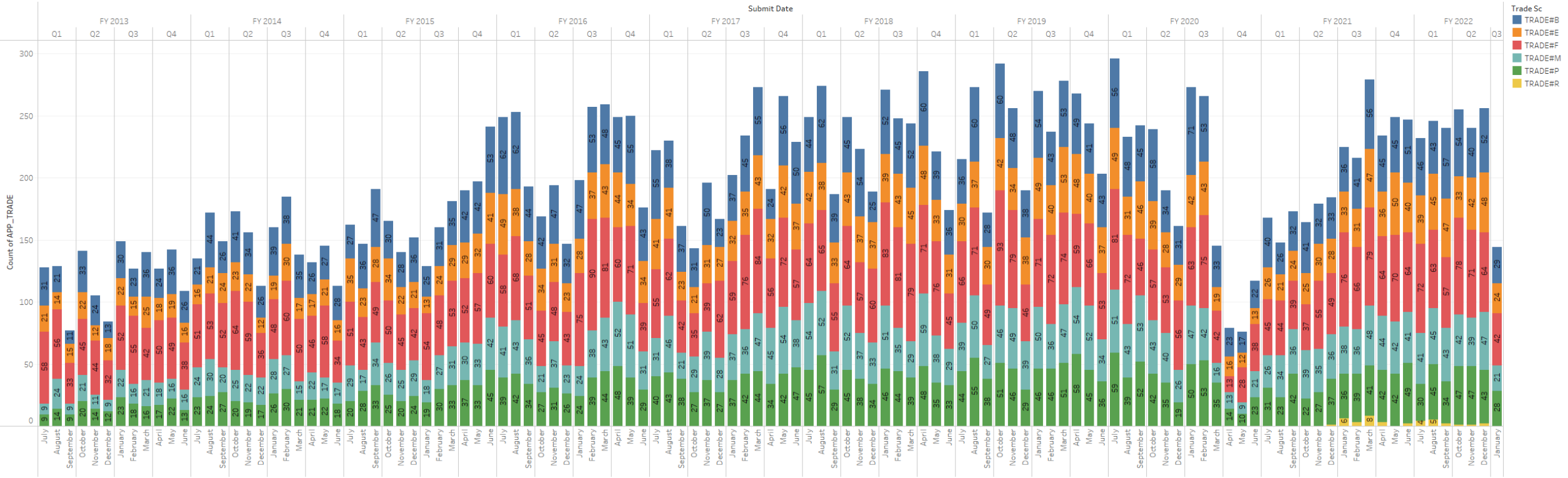
COQB Applications - Types



Count of APP for each Submit Date Month broken down by Submit Date Year and Submit Date Quarter. Color shows details about App Type Sc. The marks are labeled by count of APP. The view is filtered on Submit Date Year, which has multiple members selected.



COQB Applications - Trades



Trade Sc
 TRADE#B
 TRADE#E
 TRADE#F
 TRADE#M
 TRADE#P
 TRADE#R

Count of APP_TRADE for each Submit Date Month broken down by Submit Date Year and Submit Date Quarter. Color shows details about Trade Sc. The marks are labeled by count of APP_TRADE. The data is filtered on minimum of Submit Date and Cert Level Sc. The minimum of Submit Date filter includes dates on or after 7/1/2012 12:00:00 AM. The Cert Level Sc filter keeps multiple members.



Rules

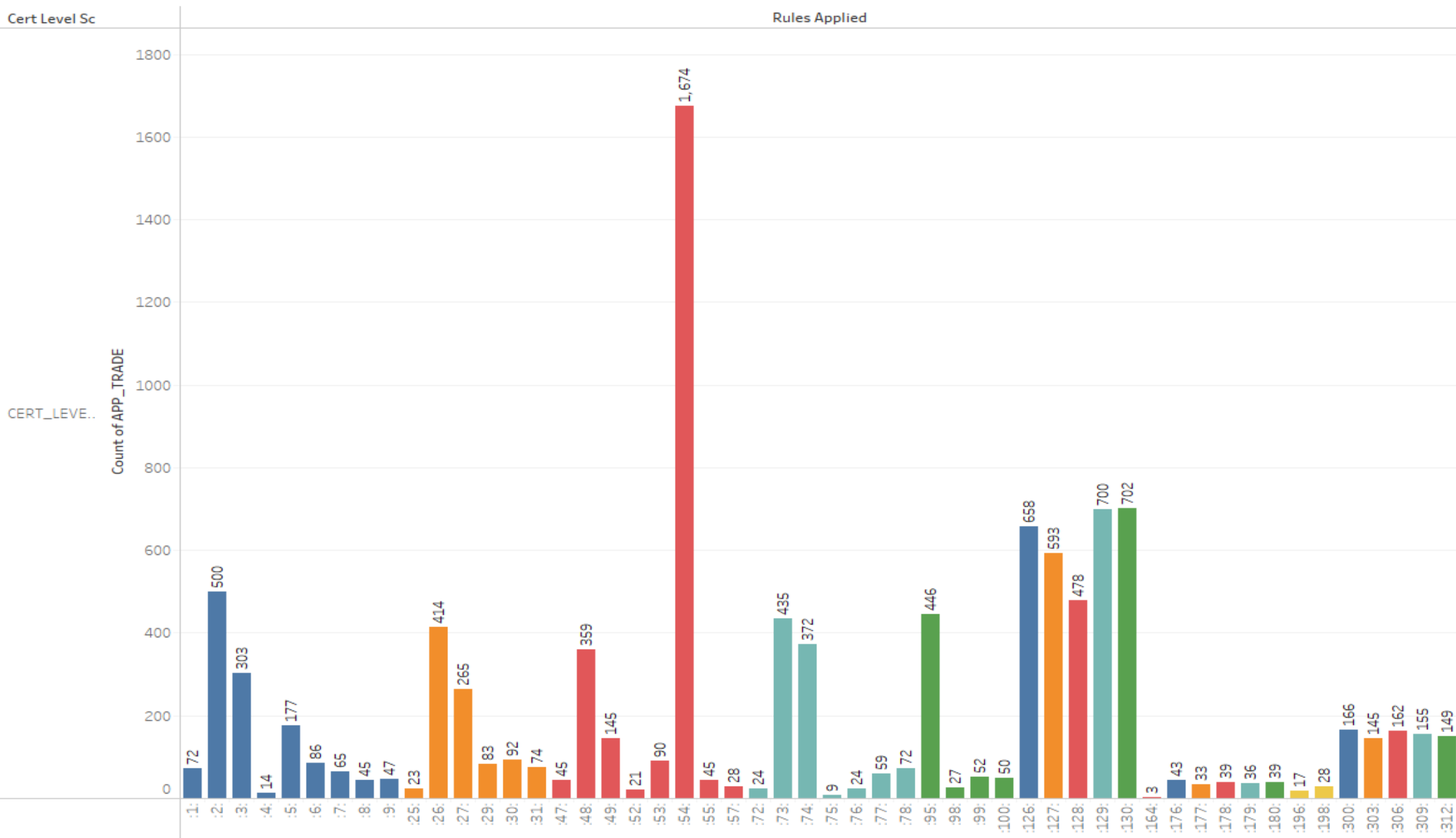
Cert Level Sc

Rules Applied

Trade Sc
TRADE#B
TRADE#E
TRADE#F
TRADE#M
TRADE#P
TRADE#R

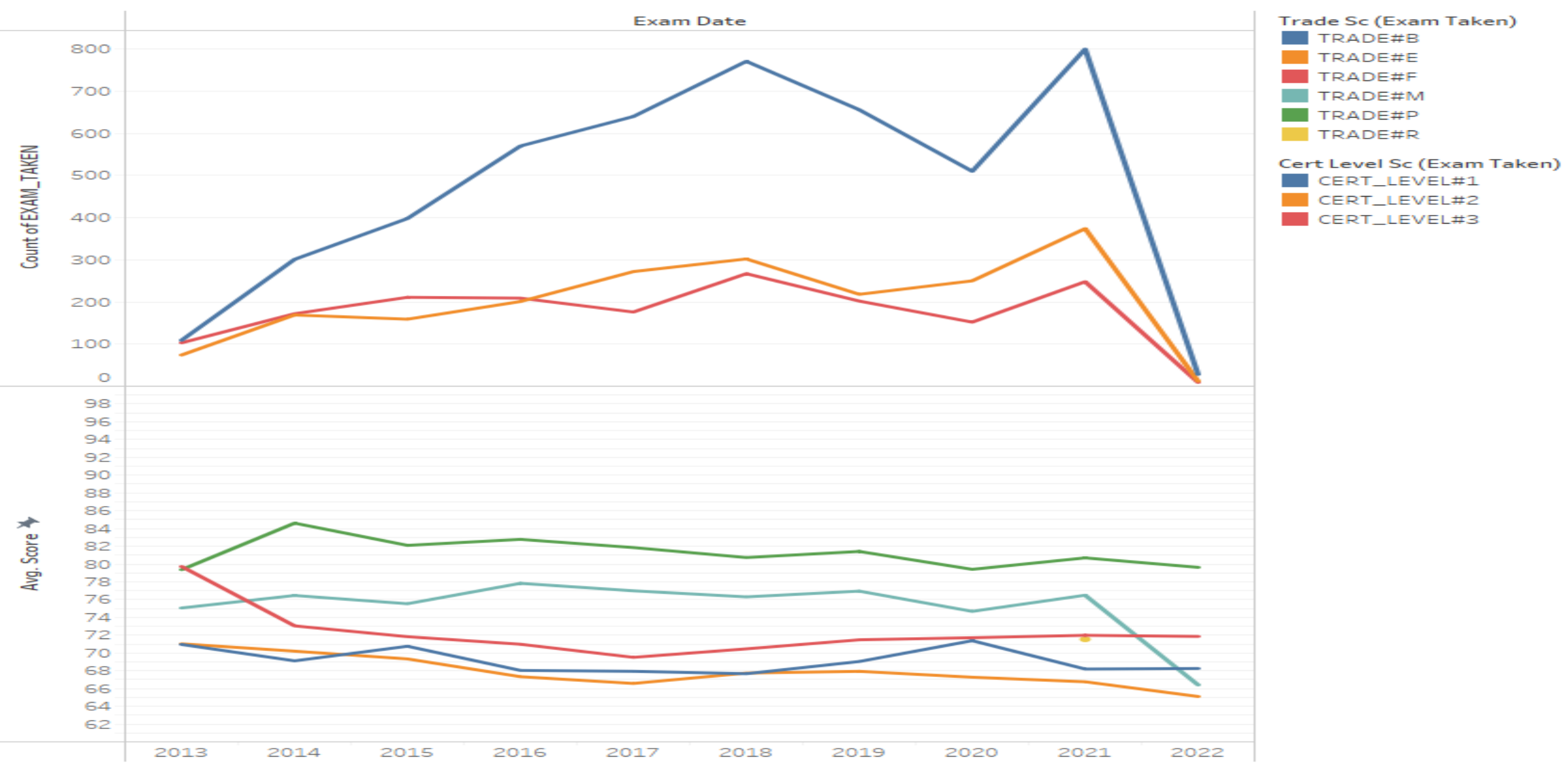
CERT_LEVEL#1

Count of APP_TRADE



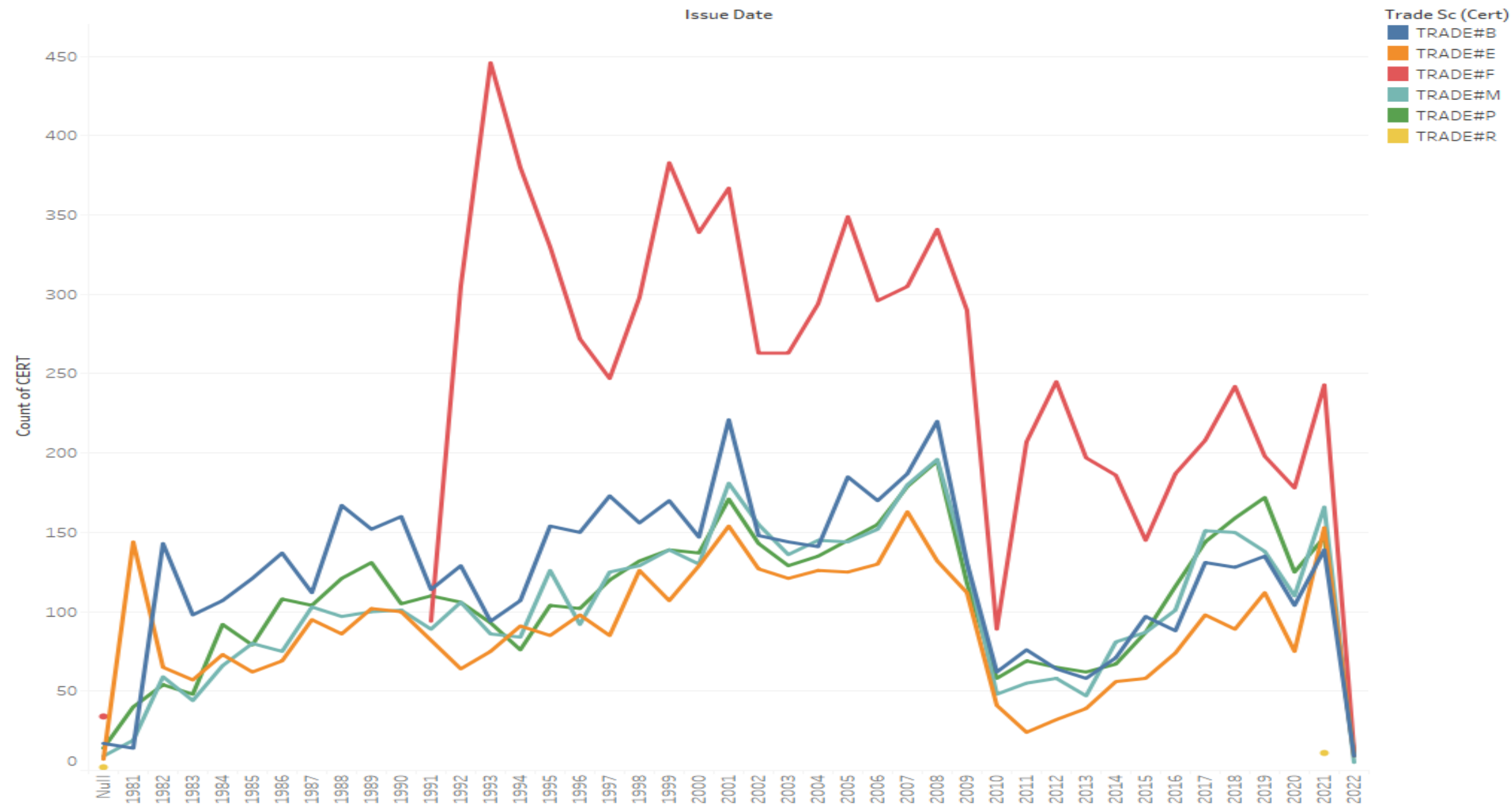
Count of APP_TRADE for each Rules Applied broken down by Cert Level Sc. Color shows details about Trade Sc. The marks are labeled by count of APP_TRADE. The view is filtered on Cert Level Sc and Rules Applied. The Cert Level Sc filter keeps CERT_LEVEL#1. The Rules Applied filter keeps 52 members.

Exams



The trends of count of EXAM_TAKEN and average of Score for Exam Date Year. For pane Count of EXAM_TAKEN: Color shows details about Cert Level Sc (Exam Taken). For pane Average of Score: Color shows details about Trade Sc (Exam Taken). The data is filtered on Exam Date, which includes dates on or after 7/1/2013 12:00:00 AM. The view is filtered on Cert Level Sc (Exam Taken) and Trade Sc (Exam Taken). The Cert Level Sc (Exam Taken) filter keeps CERT_LEVEL#1, CERT_LEVEL#2 and CERT_LEVEL#3. The Trade Sc (Exam Taken) filter keeps 6 of 6 members.

Certificates



The trend of count of CERT for Issue Date Year. Color shows details about Trade Sc (Cert). The data is filtered on Cert Level Sc (Cert) and Cert Type Sc. The Cert Level Sc (Cert) filter keeps CERT_LEVEL#1, CERT_LEVEL#2 and CERT_LEVEL#3. The Cert Type Sc filter keeps CERT_TYPE#S.