

**NC Department of Insurance  
Office of the State Fire Marshal - Engineering Division  
1202 Mail Service Center, Raleigh, NC 27699-1202  
919-661-5880**

**Interior Load-Bearing Wall Penetrations Related to Type I-A, I-B, II-A, III-A, IV & VA  
Fire-Resistant-Rated Construction**

**Code:** 2012 Building Code  
**Section:** 713.3

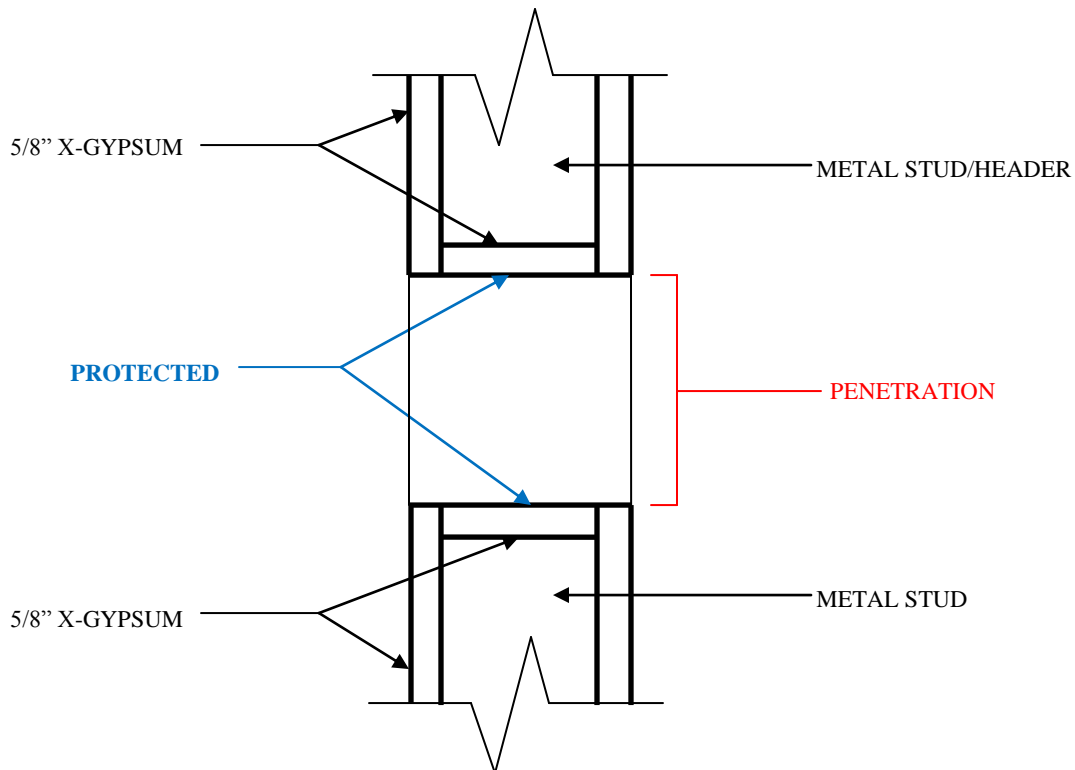
**Date:** September 1, 2011  
**Rev:** October 15, 2013

**Question:**

Are penetrations in an interior load-bearing wall required to comply with NC Building Code (NCBC), Section 713.3 if the wall is rated for the sole purpose of achieving the “construction type” as described in the NCBC, Chapter 6?

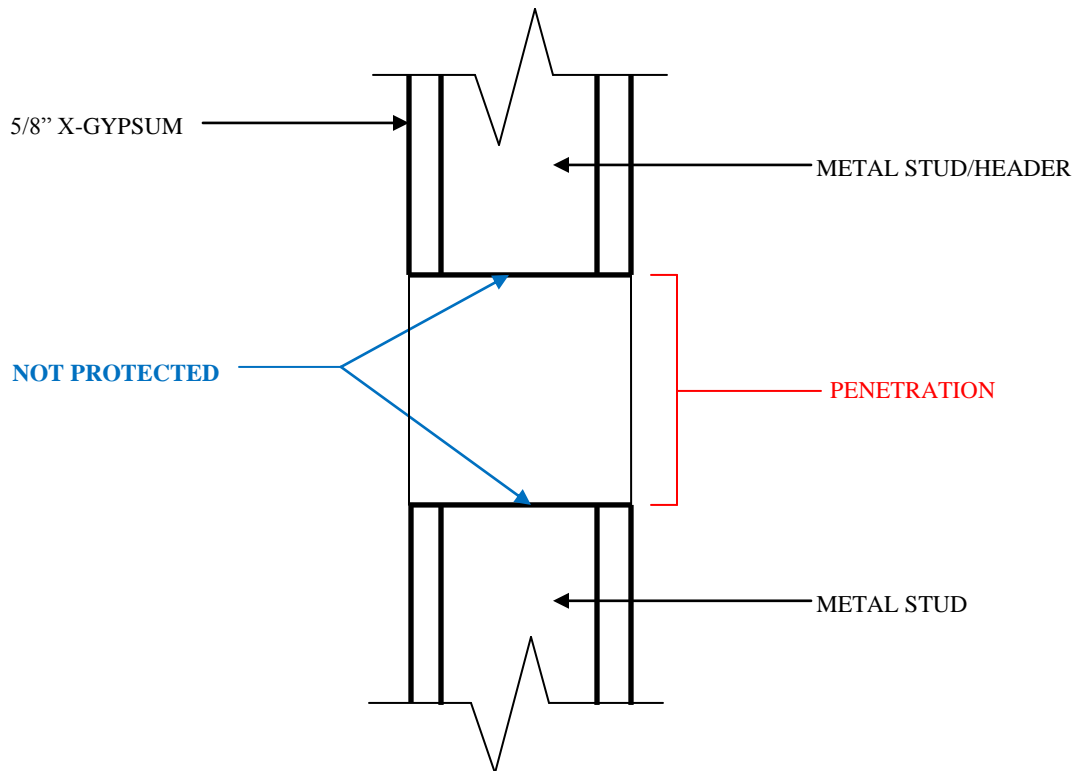
**Answer:**

No. The penetration is not required to comply with NCBC, Section 713.3 as long as the wall is not required to be fire-resistant-rated for any other reason than “construction type”. The penetration, however, cannot compromise the required rating of the wall. See figures below for generic examples of acceptable and unacceptable interior load-bearing wall penetration for Type IIA construction.



**ACCEPTABLE 1-HOUR INTERIOR WALL SECTION for  
TYPE IIA CONSTRUCTION**

**Figure 1**



**UNACCEPTABLE 1-HOUR INTERIOR WALL SECTION  
for TYPE IIA CONSTRUCTION**

**Figure 2**

**Keywords:**

Construction type, fire rated, Type I-A, Type IA, Type 1A, Type I-B, Type IB, Type 1B, Type II-A, Type 2A, Type III-A, Type IIIA, Type 3A, Type V-A, Type VA, Type 5A